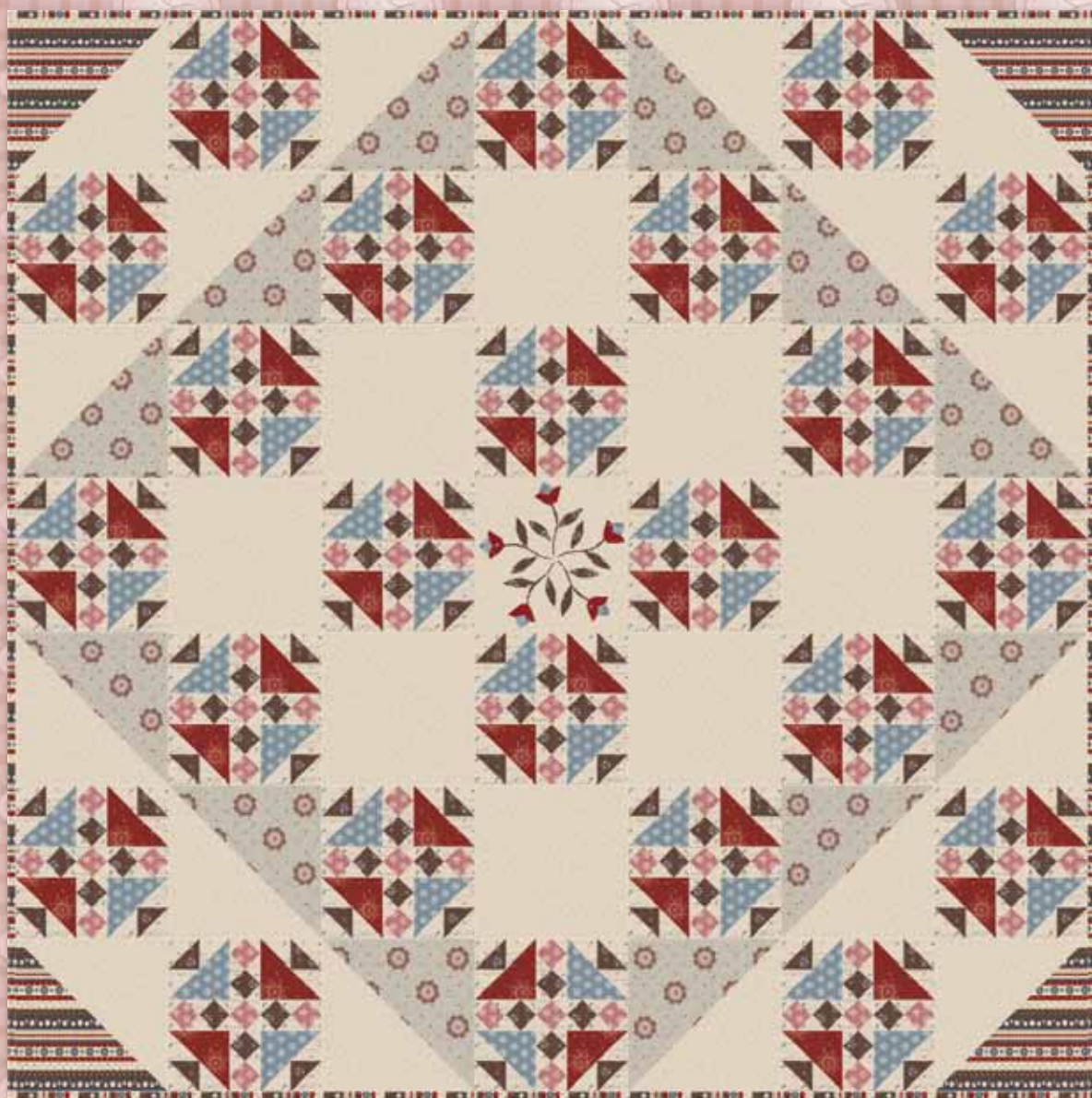


Rose Petals


Riley Blake
DESIGNS

Sue Daley
DESIGNS



Rose Petals

FINISHED QUILT SIZE 70" x 70"

Finished Block Size 10" x 10"

Measurements include ¼" seam allowance.

Sew with right sides together unless otherwise stated.

This project is for advanced quilters. Please check our website www.rileyblakedesigns.com for any revisions before starting this project. This pattern requires a basic knowledge of quilting technique and terminology.

FABRIC REQUIREMENTS

¾ yard (70 cm) brown main (C3100 Brown)
½ yard (40 cm) red main (C3100 Red)
¾ yard (30 cm) multi rose (C3101 Multi)
½ yard (40 cm) blue medallion (C3102 Blue)
¾ yard (30 cm) red medallion (C3102 Red)
2 yards (1.8 m) blue damask (C3103 Blue)
½ yard (10 cm) blue flower (C3104 Blue)
¾ yard (80 cm) brown flower (C3104 Brown)
2 yards (1.8 m) blue polka dot (C3105 Blue)
½ yard (10 cm) red polka dot (C3105 Red)
Binding ¾ yard (50 cm)
Backing 4½ yards (3.9 m)

CUTTING REQUIREMENTS

Please read instructions first before cutting. Seam allowances vary so measure through the center of the quilt before cutting border pieces.

Prairie Rose Block

Cut 96 squares 1⅞" x 1⅞" from brown flower
Cut 120 squares 1⅞" x 1⅞" from red medallion
Cut 48 squares 2⅞" x 2⅞" from brown flower. Cut each square once diagonally to create 96 triangles. Label as Triangle A.
Cut 144 squares 2⅞" x 2⅞" from blue polka dot. Cut each square once diagonally to create 288 triangles. Label as Triangle A.
Cut 144 squares 1⅞" x 1⅞" from blue polka dot. Cut each square once diagonally to create 288 triangles. Label as Triangle B.
Cut 72 squares 3¼" x 3¼" from blue polka dot. Cut each square twice diagonally to create 288 triangles. Label as Triangle C.
Cut 24 squares 4⅞" x 4⅞" from red main. Cut each square once diagonally to create 48 triangles. Label as Triangle D.
Cut 24 squares 4⅞" x 4⅞" from blue medallion. Cut each square once diagonally to create 48 triangles. Label as Triangle D.

Flower Appliqué

Using the templates provided, cut the following. Add a ¼" seam allowance if necessary for your favorite method of appliqué.

5 buds from blue flower
5 petals from red polka dot
10 leaves from brown flower
5 stems from brown flower
Cut 1 square 10½" x 10½" from blue damask

Half Square Triangle Block

Cut 8 squares 11" x 11" from blue damask
Cut 2 squares 11" x 11" from multi rose
Cut 6 squares 11" x 11" from brown main

Center Block

Cut 8 squares 10½" x 10½" from blue damask

QUILT ASSEMBLY

Refer to quilt photo for placement of fabrics.

Prairie Rose Block

Sew a brown flower Triangle A and blue polka dot Triangle A together to create a Square Unit. Sew a blue polka dot Triangle A to each side of the Square Unit to create Unit 1. Sew a red main or blue medallion Triangle D to Unit 1 to create Unit 2. Repeat to create 48 red main Unit 2's and 48 blue medallion Unit 2's. Unit 2 should measure 4½" x 4½" unfinished.



Square Unit

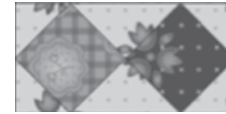


Unit 1



Unit 2

Sew a brown flower 1⅞" square, a red medallion 1⅞" square, 2 blue polka dot Triangle C's, and 4 blue polka dot Triangle B's together to create Unit 3. Repeat to create 48 Unit 3's. Unit 3 should measure 2⅞" x 4½" unfinished.



Unit 3

Sew 2 brown flower 1⅞" squares, 3 red medallion 1⅞" squares, 8 blue polka dot Triangle C's, and 4 blue polka dot Triangle B's together to create Unit 4. Repeat to create 24 Unit 4's. Unit 4 should measure 2⅞" x 10½" unfinished.



Unit 4

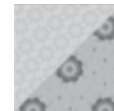
Referring to quilt photo for unit placement, sew together 2 red main Unit 2's, 2 blue medallion Unit 2's, 2 Unit 3's, and 1 Unit 4 to create the Prairie Rose Block. Repeat to make 24 Prairie Rose Blocks.



Prairie Rose Block

Half Square Triangle Block

Draw a line from corner to corner on the wrong side of the blue damask 11" squares. Place the blue damask 11" squares on top of the brown main 11" squares and multi rose 11" squares. Sew ¼" on each side of the line. Cut on the lines to make 16 Half Square Triangle Blocks (12 Brown Main and 4 Multi Rose). Press. Square up the Half Square Triangle Blocks to 10½".



Half Square Triangle Block

Flower Appliqué

Use your favorite method of appliqué. Refer to quilt photo for placement of flower buds, petals, leaves and stems.

Quilt Center Assembly

Refer to quilt photo for placement of Prairie Rose Blocks, Half Square Triangle Blocks, Flower Appliqué Block, and Center Blocks. Lay out blocks in 7 rows of 7 blocks. Sew rows together to complete the center of the quilt.

Finish quilt by layering the quilt top, batting, and back. Bind with your favorite Riley Blake fabric from the Prairie Rose Collection. Have fun with your colors and enjoy the journey of making your quilt.