

# Cat's Cradle Block

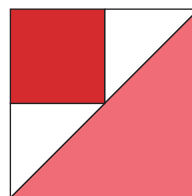
Multiple finished sizes: 3", 4", 5" and 6"

by Julie Cefalu  
TheCraftyQuilter.com

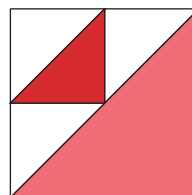


This pattern includes instructions for making the Cat's Cradle Block with exact measurements as well as making it oversized so you can trim down to the exact size. You can choose to make it with a corner square (Option A) or a corner HST unit (Option B).

- Please read all instructions before beginning.
- Seam allowance = 1/4"
- HST = half square triangle
- RST - right sides together
- Instructions yield TWO blocks
- No special rulers required, however a square ruler larger than block size is helpful.

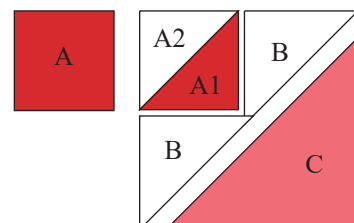


Option A



Option B

Additional tips for making this block can be found at <https://thecraftyquilter.com>



Cat's Cradle Cutting Chart  
OVERSIZED dimensions

	Color/ Piece	Qty	Finished Block Size				Sub-cut
			3"	4"	5"	6"	
Opt. A or Opt. B	A	2	2"	2 1/2"	3"	3 1/2"	<input type="checkbox"/>
	A1	1	2 1/2"	3"	3 1/2"	4"	<input type="checkbox"/>
	A2	1	2 1/2"	3"	3 1/2"	4"	<input type="checkbox"/>
	B	2	2 1/2"	3"	3 1/2"	4"	<input checked="" type="checkbox"/>
	C	1	4"	5"	6"	7"	<input checked="" type="checkbox"/>

Cat's Cradle Cutting Chart  
EXACT dimensions

	Color/ Piece	Qty	Finished Block Size				Sub-cut
			3"	4"	5"	6"	
Opt. A or Opt. B	A	2	2"	2 1/2"	3"	3 1/2"	<input type="checkbox"/>
	A1	1	2 3/8"	2 7/8"	3 3/8"	3 7/8"	<input type="checkbox"/>
	A2	1	2 3/8"	2 7/8"	3 3/8"	3 7/8"	<input type="checkbox"/>
	B	2	2 3/8"	2 7/8"	3 3/8"	3 7/8"	<input checked="" type="checkbox"/>
	C	1	3 7/8"	4 7/8"	5 7/8"	6 7/8"	<input checked="" type="checkbox"/>

## Piecing Instructions

Option A: Continue to next section

Option B: Make HST units

1. On the wrong side of A2 square, draw a diagonal line from corner to corner.
2. Place A2 square and A1 square RST and stitch 1/4" on each side of the diagonal line.
3. Cut apart on the diagonal line.
4. Press towards A1. Trim each HST to size shown in Table A. Makes 2 HST units.

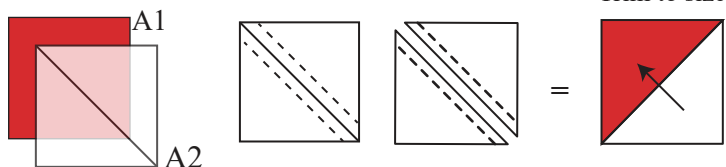


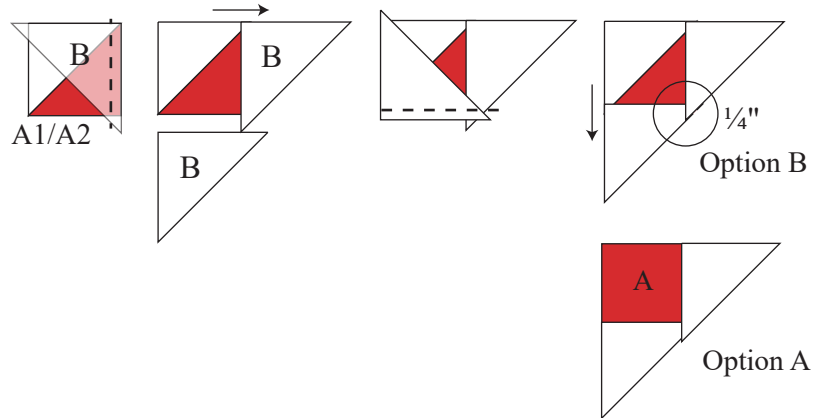
Table A

Finished block size	3"	4"	5"	6"
HST TRIM SIZE	2"	2 1/2"	3"	3 1/2"

Note: the following diagrams show Option B using the A1/A2 HST unit in place of square A.

### Make pieced triangle section

1. Arrange A square (or A1/A2 HST unit) and B triangles as shown.
2. Stitch B triangles to two adjacent sides of A square (or HST unit) and press towards the triangles.
3. There should be enough overlap at the small triangles to create a 1/4" seam allowance.
4. If using exact cutting dimensions, continue to final assembly; otherwise, proceed to trimming as described below.

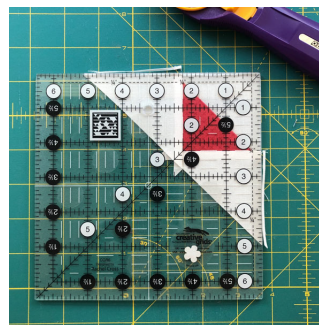
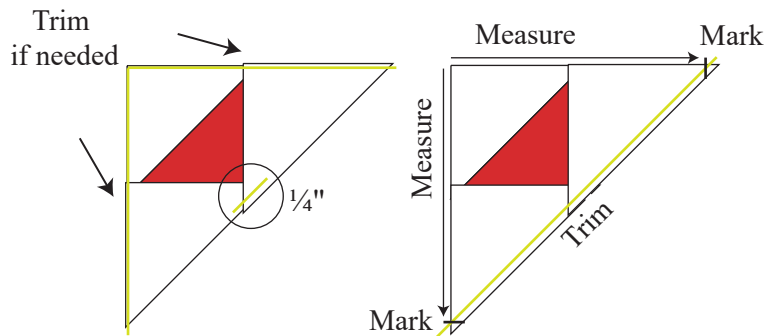


### Trimming (oversized dimensions only)

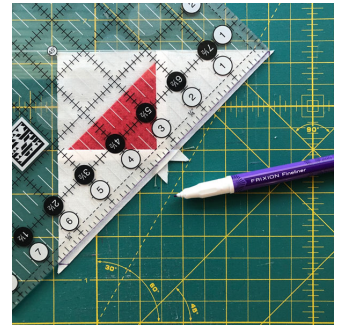
1. Make sure the two short sides of the triangle are square by placing a square ruler over that corner. Trim if needed.
2. Measure the short sides from the square corner to each end as follows:

3" finished = 3 7/8"  
4" finished = 4 7/8"  
5" finished = 5 7/8"  
6" finished = 6 7/8"

3. Draw a mark at each measurement.
4. Place ruler so that it connects both marks along the long edge. Make sure there is 1/4" from the center pieced point to the ruler edge.
5. Trim long side.



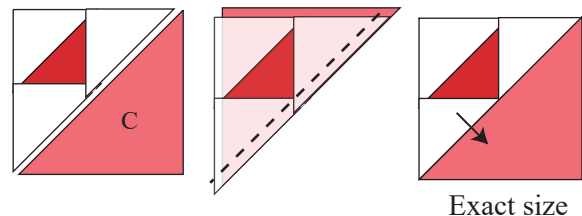
Trimming short sides



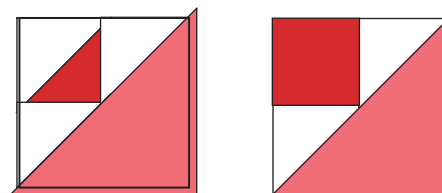
Trimming long side

### Final Assembly

1. With RST, sew a C triangle to long edge of pieced triangle unit.
2. Press towards C.
3. If using exact dimensions, unit should measure the unfinished size (finished size + 1/2").
4. If using oversized dimensions, trim to correct unfinished size. Most of the trimming should be along the C triangle edges.
5. Repeat to make two Cat's Cradle Blocks.



Exact size



Trim for oversized